



## LED lighting for agricultural application in greenhouses.

LED (Light Emitting Diode) technology is being applied more and more as LEDs become more powerful. Flowmagic has developed a concept especially for the agricultural sector that is available for testing and production in this sector.

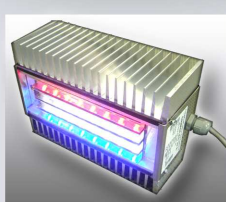
### ClusterLED 32<sup>®</sup>

The ClusterLED 32 with 32 high power Agro LEDs is developed for use in greenhouses and test situations in laboratories. Because there is no Infra Red Heat the ClusterLED 32 can be placed just above the crops for maximum light intensity. The ClusterLED 32 is available in all Agro LED system colours that will effect the physical plant growth in length and stronger roots. Also the ClusterLED 32 has a manual dim function. All this in combination with low energy usage, no Infra Red heat and long lifetime is a big step forward in Agricultural LED lightning.



### Advantages of the ClusterLED 32<sup>®</sup> are:

- ⇨ Lower energy usage
- ⇨ No Infra Red heat
- ⇨ Manual dim function
- ⇨ Lightning close to the crops possible
- ⇨ Exact colours/spectrum for photosynthesis
- ⇨ Passive Cooling
- ⇨ Long lifetime
- ⇨ Watertight housing



Flowmagic BV  
Bovendijk 35c  
2295 RV Kwintsheul (gem. Westland)

Telefoon: +31 (0) 174-243578

Fax: +31 (0) 174-248700

E-mail: [info@flowmagic.nl](mailto:info@flowmagic.nl)

Website: [www.agroledsystem.nl](http://www.agroledsystem.nl)  
[www.flowmagic.nl](http://www.flowmagic.nl)

© 2007 by Flowmagic BV - all rights reserved.

